

Production

For cold steel wiring processes with high or low carbon, copper, brass and aluminium content.

- Round or Shaped button dies with special profiling available on request from client
 - Button dies for tubes
 - Dies for sharpening tubes
 - Spindles in steel or with hard metal supports
 - Standard-profile dies – hexagonal, squared, rectangular, etc.
 - Special profiles also available on request, in both ferrous and non-ferrous metals
 - Polishing discs
 - Shaving tools for copper rod
-
- Flat plain rollers, shaped according to desired design, in full hard metal or in steel with hard metal insert, for hot strip rolling mills.
 - Metercounter rollers
 - Rollers for fluorine forming
 - Plates for hard metal moulding, blank or with surfaces adjusted to measure on request
 - Saddles for decomposable boxes for cold drawing
 - Dies for continual radial cold extrusion processes, using Holton and Conform Dalian lines for copper and its alloys or aluminium
 - Brass extrusion dies

Various equipment

Plates for hard metal moulding, blank or with surfaces adjusted to measure on request – Polishing discs – Saddles for decomposable boxes for cold drawing – Shaving tools for copper rod.

Spindles



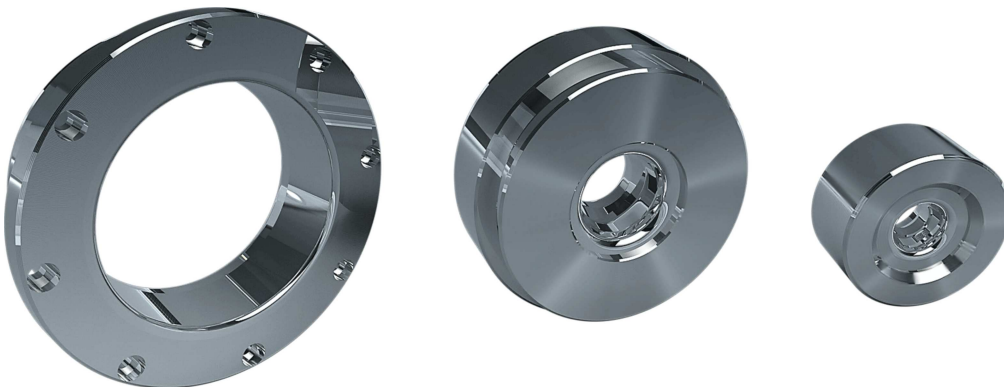
Round shaped spindles – semi-floating, in full hard metal or with steel supports.

Rollers



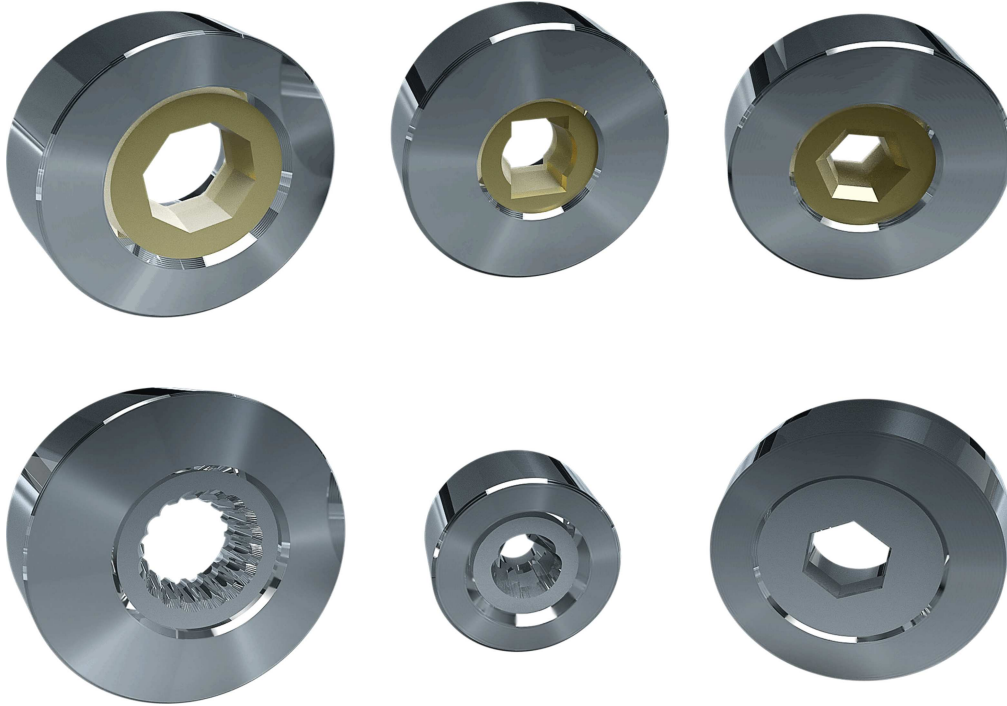
Flat plain rollers, shaped according to desired design, in full hard metal or in steel with hard metal insert, for hot strip rolling mills – Metercounter rollers – Rollers for fluorine forming – Hem rollers.

Round dies



Round dies for wire-rod and tube – Dies for sharpening tubes – Compacting and cording dies, production range $\varnothing 2.00 \div \varnothing 300.00$

Shaped dies / moulds



Standard profile dies – hexagonal, squared, rectangular for wire-rod and tubes. Special profiles also available on request, in both ferrous and non-ferrous metals. Dies for continual radial cold extrusion precesses, using Holton and Conform Dalian lines for copper and its alloys or aluminium, extrusion dies for brass.